



# Iowa Statewide Assessment of Student Progress

---

Statewide Assessment System Advisory Group

September 25, 2018

Cathy Welch and Steve Dunbar

University of Iowa

# Agenda

Background on ISASP Process

Overview of the Alignment Process

Accessibility Guidelines

ISASP Portal

Questions and Discussion



**ISASP**

# Iowa Statewide Assessment of Student Progress

- Developed and delivered as a partnership between the Iowa Department of Education and the University of Iowa.
- Developed to be aligned, reliable, valid and fair.
- Delivered efficiently and effectively
- Providing information about student growth and proficiency



# House File 2235 Requirements

- Administered during the last quarter of the school year
- Measures student achievement as defined by the Iowa Core
- Measures student growth
- Provides online and paper/pencil administration
- Meets summative assessment requirements of ESSA
- Assesses Reading, Language/Writing, Mathematics (grades 3 to 11) and Science (grades 5, 8 and 10)

# 2018-2019 Milestones for Districts

Fall 2018	Professional development opportunities Face-to-face and webinar
January 2018	Student registration (online and paper/pencil)
March/May 2019	Administration window
June 2019	Scoring
July 2019	Standard setting study conducted
August/ September 2019	Proficiency descriptions released

## Forms Assembled

- Specifications finalized
- Year 1 forms assembled

## Forms Aligned

- Peer-reviewed by independent, third-party evaluator

## Administration

- Spring 2019
- March through May

## Scoring

- Rangefinding
- Artificial intelligence modeling

## Standard Setting

- Conducted by delivery vendor
- Coordinated by IDOE and UI

## ESSA Report

- Coordinated by IDOE after the first year of operational data is available and analyzed

# Item Formats and Testing Time Guidelines

Test Component	Item Formats	Testing Time Guidelines
Reading (Grades 3 to 11)	Selected-response Constructed-response Technology-enhanced	~60 minutes
Language/Writing (Grades 3 to 11)	Selected-response Technology-enhanced Extended constructed-response	~120 minutes
Mathematics (Grades 3 to 11)	Selected-response Technology-enhanced Constructed-response	~60 minutes
Science (Grades 5, 8 and 10)	Selected-response Technology-enhanced Constructed-response	~60 minutes

# Test Delivery

## Online

- District Decision
- Artificial Intelligence and Hand Scoring of open-ended items
- Will include field test items
- Will include a variety of item formats

## Paper and Pencil

- District Decision
- Hand Scoring of open-ended items
- Will not include field test items
- Will include a variety of item formats



# Reporting Metrics

## Proficiency

Will be determined after the standard setting in the summer of 2019. Will be established on the scale score metric.

## Growth

Will be determined after the Spring 2020 administration after two consecutive years of testing.



# Independent Alignment Study

# House File 2235 Requirements

The legislation requires that the assessment must

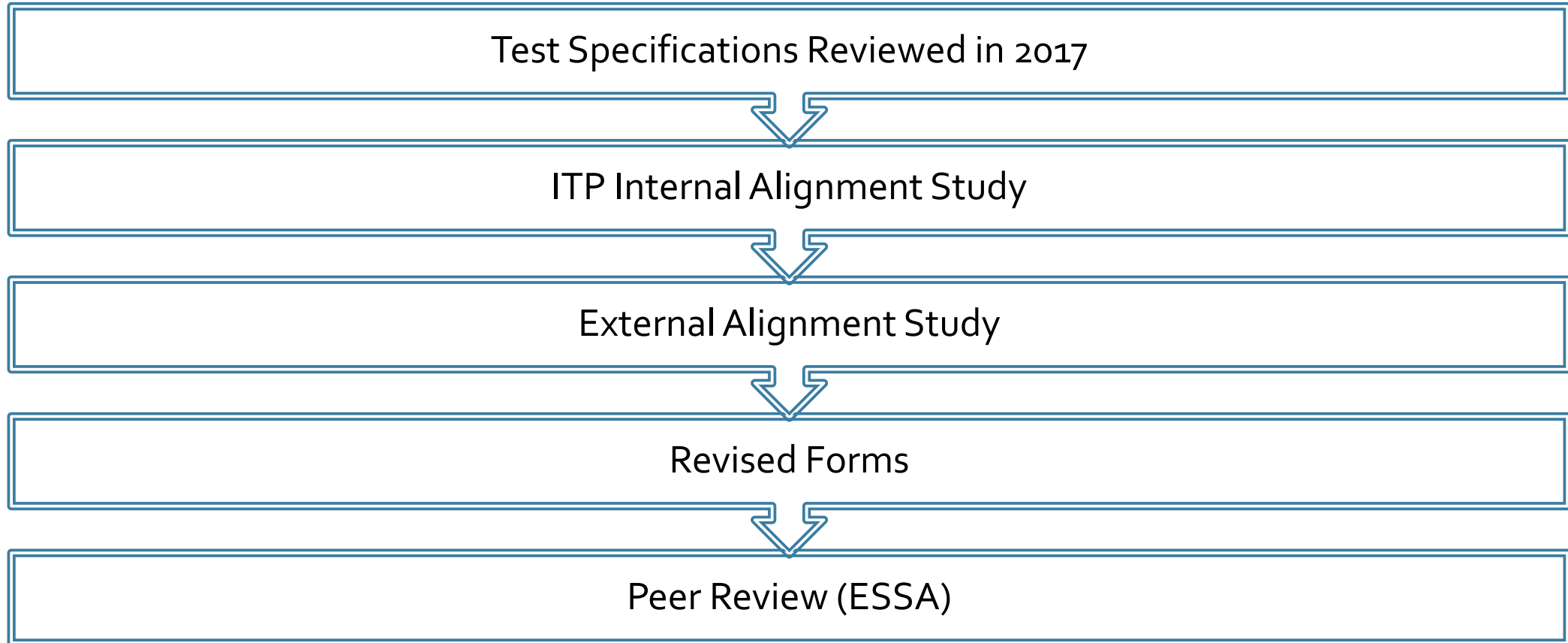
- Be peer-reviewed by an independent, third-party evaluator to determine that the assessment is aligned with the Iowa core academic standards.
- Provide a measurement of student growth and student proficiency.
- Meet the summative assessment requirements of the federal Every Student Succeeds Act.

# What is Alignment?

- The same expectations must drive **both** assessment **and** curriculum and instruction. Assessments are meant to address the **breadth** and **depth** of the content and performance standards.
- Alignment allows us to interpret assessment scores in relation to the standards on which those assessments are meant to be based.
- Alignment is a **process**—we are constantly accumulating evidence to support alignment.



# Alignment Process



# Process for Independent Evaluation

- Objective evaluation of item meta data evaluated by Human Resources Research Organization (HumRRO) alignment evaluation experts.
- Judgments by content experts collected using trained Iowa educators during an alignment workshop.
- Individual ratings in addition to group consensus discussions were included in data collection process.



# Status Update on External Alignment Process

- Interim report under preparation by HumRRO staff
- Interim report to include proof-of-concept evaluation of assessment design and claims; assessment specifications and blueprints with respect to breadth and depth of content; summary of judgmental analyses of constructs, Iowa Core domains, and items
- Final report to include evaluation of assessment results and reports to document full implementation with respect to alignment requirements of ESSA



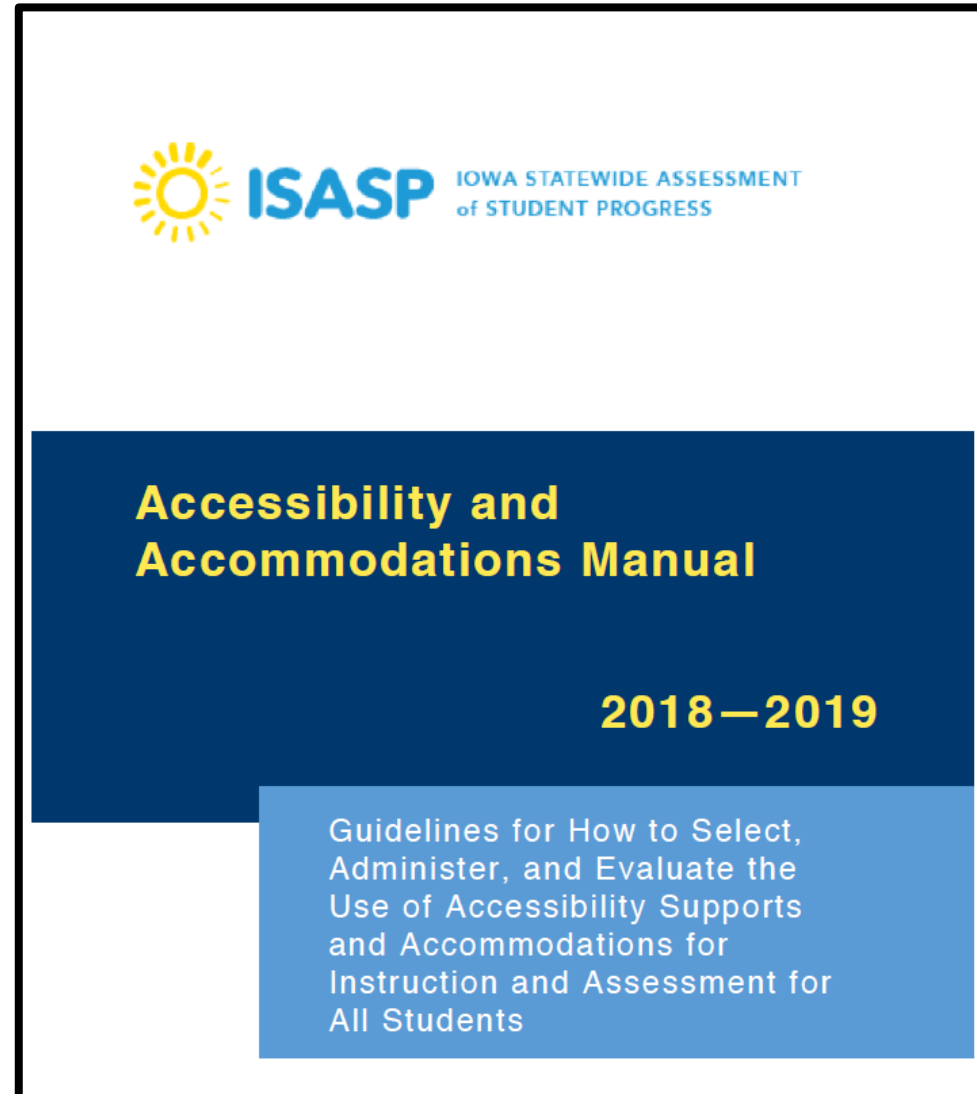
# Iowa Statewide Assessment of Student Progress

---

## Accessibility Guidelines



- Manual is under development
- Will be posted to the portal by the end of October



# Online Design Considerations

- Design to industry standards and evaluate for compliance
- Understand users with disabilities and how to create usable interfaces
- Embed features that improve access
- Offer accommodations that are configurable and user adjustable

# Features of the Delivery System

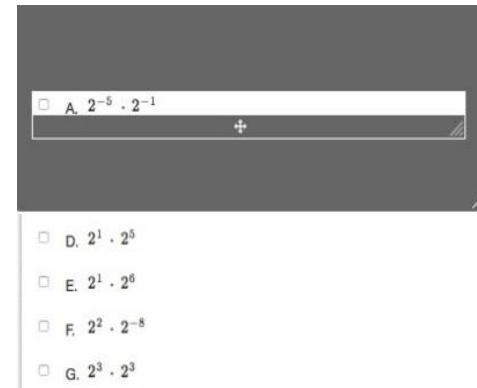
- Answer eliminator
- Highlighters and Bookmarking
- Expanded view/magnified view
- Answer masking
- Color contrast
- Calculator and Notepad
- Tutorial for delivery system
- Text to speech
- Spanish (mathematics and science)

# Embedded Accessibility Features -- Examples

- Color Contrast

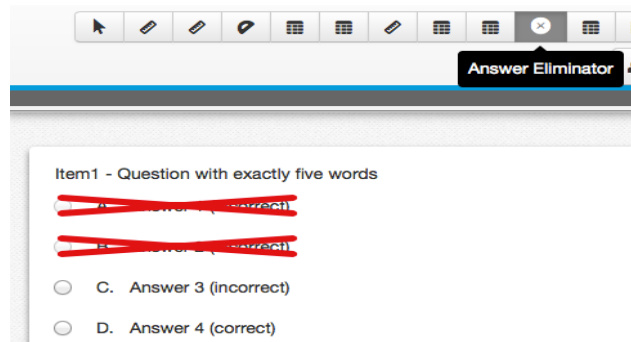


- Line Reader Masking



# Embedded Accessibility Features -- Examples

- Answer Eliminator



- Highlighter



- Answer Masking



# Additional Delivery Features

- Text-to-Speech



- Support for English and Spanish content
- Designed to support multi-sensory input (visual highlight with speech)
- “Click to hear” specific content
- Adjustable speech rate and volume

# Braille Forms

- Available in 2019
- Rendered in hard copy, Nemeth Code
- ELA, mathematics and science
- External and personal device support



# Iowa Statewide Assessment of Student Progress

---

## ISASP Portal

[Iowa Statewide Assessment of Student Progress \(ISASP\) portal](http://iowa.pearsonaccessnext.com/)

URL: <http://iowa.pearsonaccessnext.com/>





# Iowa Statewide Assessment of Student Progress

---

Questions and Discussion

# ISASP Portal

[Home](#)[PearsonAccess<sup>next</sup>](#)[Technology Setup](#)[Manuals & Training](#)[Test Preparation](#)[Reporting Resources](#)[Bulletins](#)[Support](#)

## Home

The **Iowa Statewide Assessment of Student Progress (ISASP)** are new assessments developed by Iowa Testing Programs at the University of Iowa for the state of Iowa. The assessments are aligned with the Iowa Core standards and provide a clear and accurate assessment of student learning outcomes. Student growth, proficiency and readiness indicators will be reported.

The new assessments will be administered between March and May 2019 and will be available in online and paper formats. The grade levels, tests, and recommended administration times are provided below:



Tests	Grade Levels	Recommended Administration Time (minutes)
Reading	3-11	60
Language and Writing	3-11	120
Mathematics	3-11	60
Science	5, 8 and 10	60

# ISASP Portal (cont.)

**DEVELOPMENT** ISASP was developed in collaboration with Iowa educators and students. As part of the development process, Iowa Testing Programs (ITP) contracted with Human Resources Research Organization (HumRRO) to conduct an external and independent alignment study. The goal of this study was to confirm that the assessment appropriately assesses the breadth and depth of the Iowa Core. As a part of this process, HumRRO conducted workshops where 40 Iowa educators were trained to perform the alignment tasks.

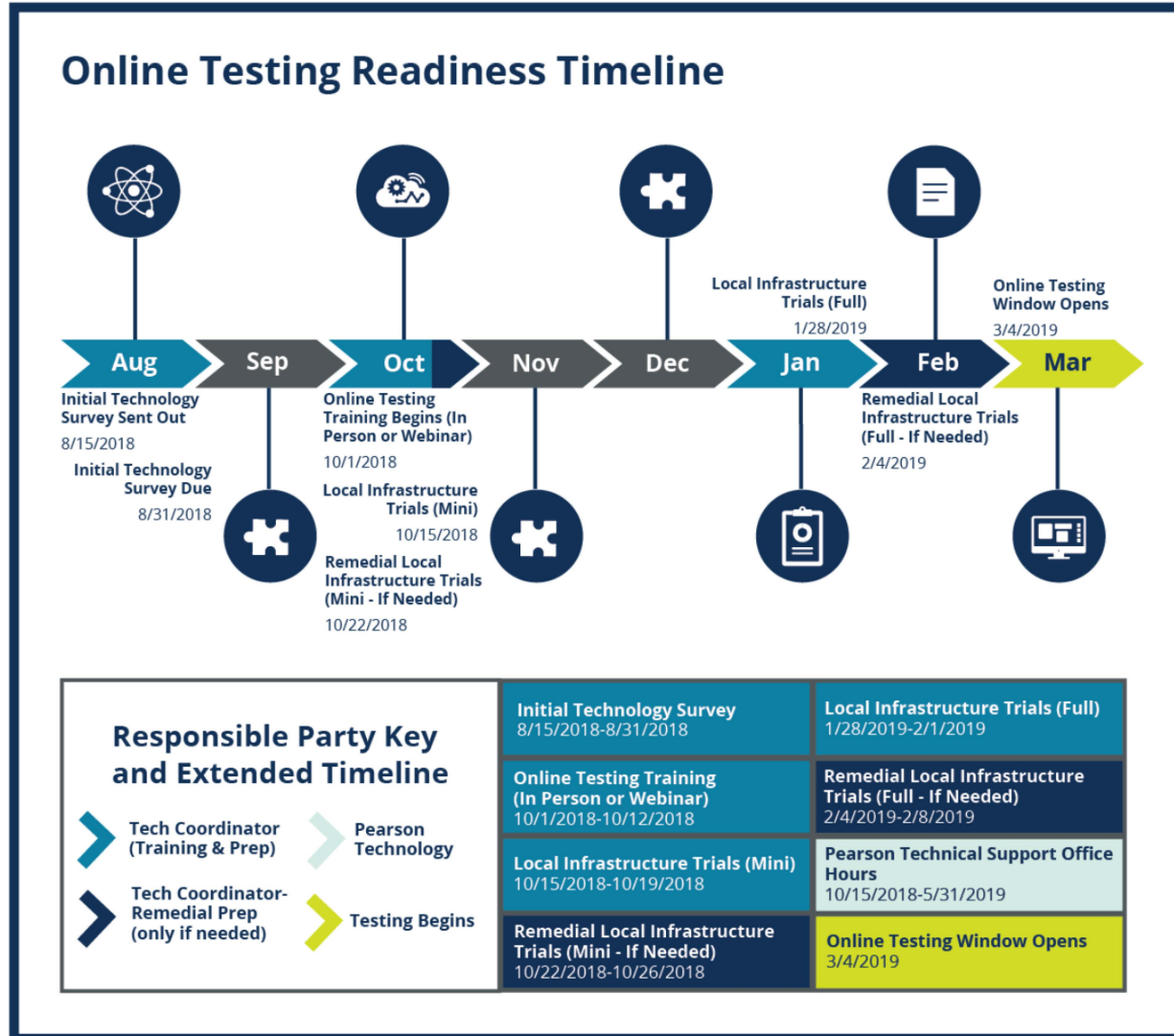
**TRAINING** Pearson will provide materials and support for district officials and will conduct training programs for school administrators to manage the online test taking process. We are working closely with teachers and administrators to ensure a smooth rollout of the new assessment. The first training sessions on technology readiness are scheduled October 1 through 12 at AEAs throughout the state. A timeline for the technology readiness is available on the [Technology Setup page](#).

# ISASP Portal

- Bulletins
  - Overview (posted)
  - Administration guidelines (early September)
  - Costs (early September)
- Technology readiness preparation
- Training materials
- Test administration documentation
- Student tutorials and practice tests.

# ⚡ Technology Setup

Use the information and tools to prepare your school's infrastructure for online testing, including downloading TestNav.



# *ISASP Online Testing Readiness Technology Training*

- **Topics:** Technology resources, Components of online testing, TestNav application, PearsonAccess<sup>next</sup>, Infrastructure setup, Infrastructure Trial (mini & full - what is expected/required)
- **Equipment:** Laptops are not necessary as the training slides will be presented to the entire group. Attendees can bring their devices to practice installing and logging into to TestNav, access online resources, and practice completing administrative tasks in the PearsonAccess Next Training Center.
- **Registration site:** <http://iowa.pearsonaccessnext.com/training-mods/>

# *ISASP Online Testing Readiness Technology Training*

Northwest AEA	Sioux City	Monday, October 1
Green Hills AEA	Council Bluffs	Monday, October 1
Keystone AEA	Elkader	Tuesday, October 2
Heartland AEA	Johnston	Tuesday, October 2
Grant Wood AEA	Cedar Rapids	Wednesday, October 3
Central Rivers AEA	Clear Lake	Thursday, October 4
Heartland AEA	Ames	Monday, October 8
Green Hills AEA	Creston	Tuesday, October 9
Central Rivers AEA	Cedar Falls	Tuesday, October 9
Great Prairie AEA	Ottumwa	Wednesday, October 10
Prairie Lakes AEA	Pocahontas	Wednesday, October 10
Mississippi Bend AEA	Bettendorf	Friday, October 12

# Additional Professional Development Trainings

Topic	Tentative Dates
Technology Readiness	October 2018
Assessment System	December 2018-January 2019
Test Administration	December 2018-January 2019
Accessibility	December 2018-January 2019
Test Resources	December 2018-January 2019
Score Reports and Data	August 2019





# Iowa Statewide Assessment of Student Progress

---

## Costs to District

## Iowa Statewide Assessment of Student Progress (ISASP) Costing Information

The ISASP student cost includes administration, scoring and reporting for 2018-2019.

Assuming the state appropriations\* are distributed among all public schools in the state (N= 761,433 tests; appropriation = \$3.55/test):

	Online	Paper/Pencil
English Language Arts (includes reading, language and writing)	\$2.30	\$3.30
Mathematics	\$1.30	\$2.30
Science	\$2.80	\$3.80

Assuming that nonpublic schools purchase ISASP with no state appropriation applied:

	Online	Paper/Pencil
English Language Arts (includes reading, language and writing)	\$5.85	\$6.85
Mathematics	\$4.85	\$5.85
Science	\$6.35	\$7.35

\*Senate Study Bill 3220 approved in 2018 appropriated \$2,700,000 to offset the costs associated with ISASP.